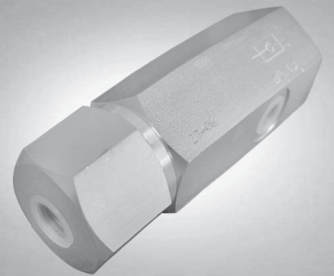
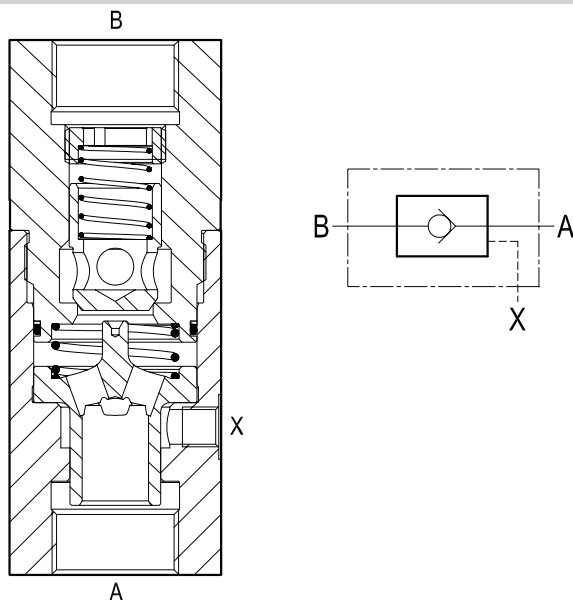


## Pilot operated check valves Single poppet type



### OV Series



### Description

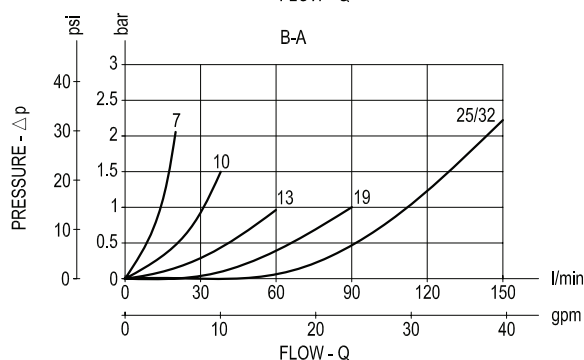
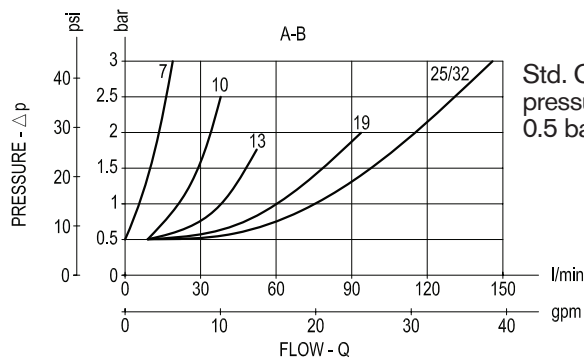
Flow is always allowed to pass from A to B when pressure at A rises above the spring bias pressure and the poppet is pushed from the seat. The valve is normally closed (checked) from B to A; when sufficient pilot pressure is present at Pil port (X), the annular pilot area pushes the poppet from its seat and flow is allowed from B to A. Precision machining and hardening process allow virtually leak-free performance in the checked condition. The valve is available in different sizes and versions for different flow ranges, as specified by the tables of the Technical data, Performance diagrams and Dimensions.

### Technical data

Code	Pressure P max bar (psi)	Flow Q max l/min (gpm)	Weight kg (lbs)	Pilot ratio
OV 7	350 (5000)	15 (4)	0.75 (1.65)	14 : 1
OV 10	350 (5000)	35 (9)	1.04 (2.29)	5 : 1
OV 13	350 (5000)	50 (13)	1.42 (3.13)	5 : 1
OV 19	250 (3600)	100 (26)	2.3 (5.1)	3.2 : 1
OV 25	250 (3600)	150 (40)	4.3 (9.5)	3.2 : 1
OV 32	250 (3600)	150 (40)	4.5 (9.9)	3.2 : 1

Steel body, zinc plated

### Performance



### Advantages

- Very compact design and inline mounting for space saving.
- Mounting position is unrestricted.
- Different values of cracking pressure are available for A-B flow ( see the relevant table).
- Six sizes provide great adaptability to the system.