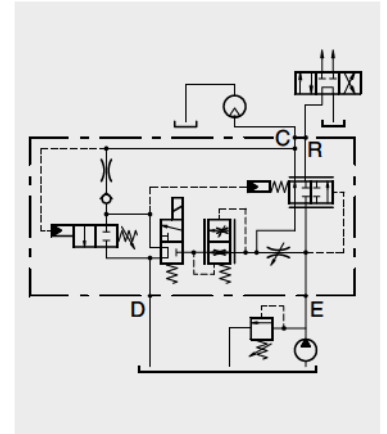


3-ways flow regulator, pressure compensated, exceeding flow to pressure, pressure relief valve and electrical cut-off on the checked way, specially designed for hydraulic hammers control. PATENTED VALVE

Type VPR/3/EP ../VMP+VE/LPD

Operation

The valve is designed to provide flow adjustment in C and concurrently discharge exceeding flow in R for other applications. A pressure relief valve provides control of the working pressure in C, while the solenoid allows for checked flow cut-off in C and retrieving in R. Best performance of the valve is assured when the flow in E is at least 10% bigger than in C. Pressure variations in C do not alter the checked flow. Working pressure in R exceeding the rating value of the pressure relief valve in C, is admissible. Cut-off in C is accompanied by a crossing load loss of 2 bar (30 psi), a constant very low drain in D and complete retrieving of all drains in C. Make sure that a pressure relief valve is always used between the pump and the valve.



Performance

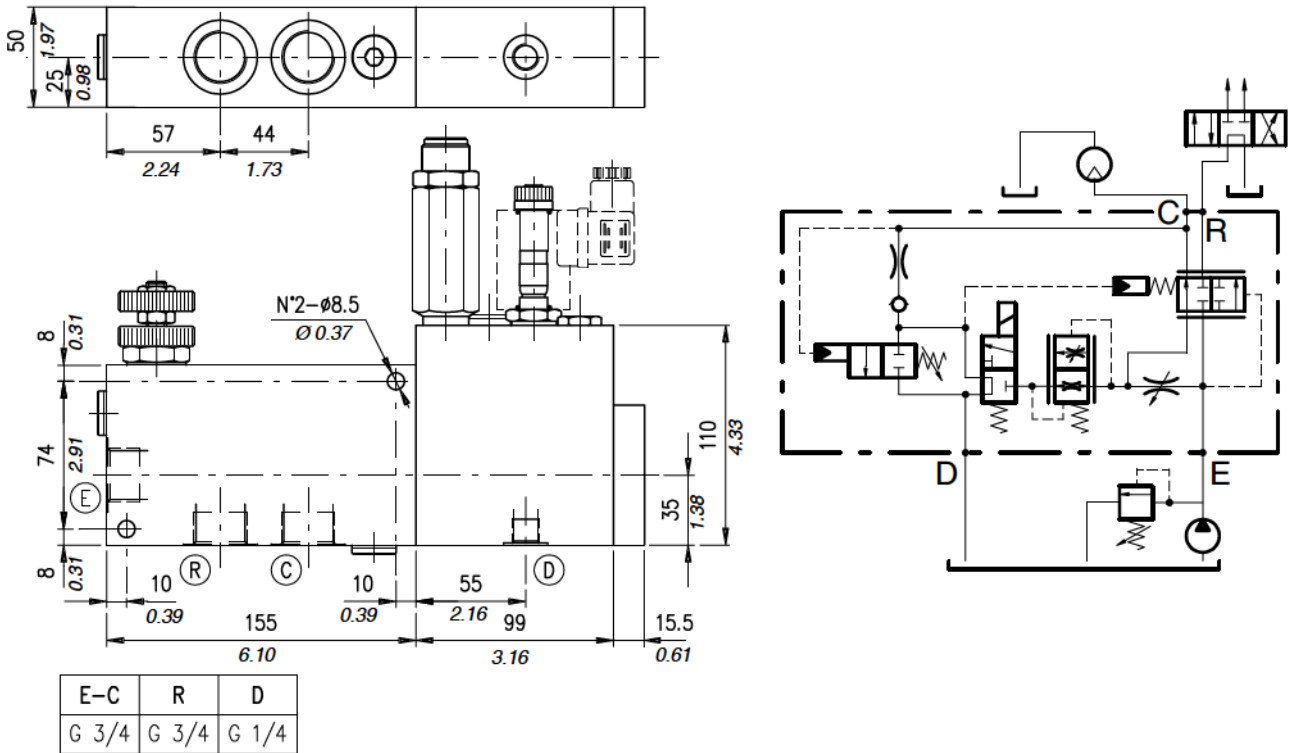
Body Valves

Type VPR/3/EP ../VMP+VE/LPD	Flow		Max. pressure	Coils	Weight	
	l/min	US gpm			kg	lb
VPR/3/EP 34/VMP+VE/LPD	E=150 C=90	E=40 C=24	350 bar -5100 psi-	BT/ ... see page 119	9,15	20,17
VPR/3/EP 100/VMP+VE/LPD	E=240 C=150	E=54 C=40			19	41,89
VPR/3/EP 114/VMP+VE/LPD	E=450 C=250	E=119 C=66			28	61,73

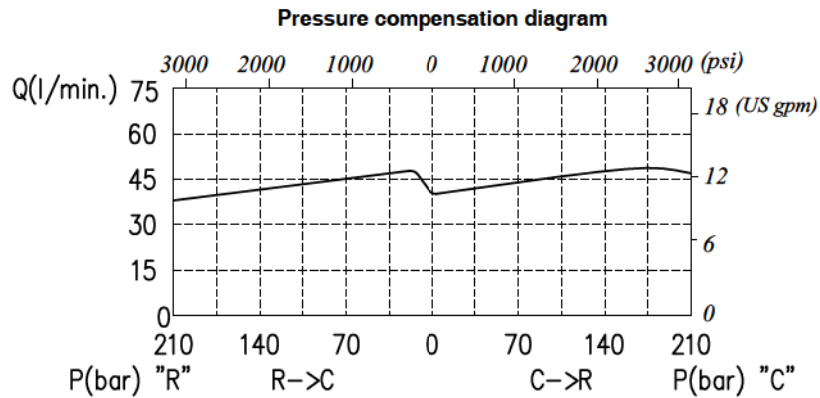
Type VPR/3/EP 34/VMP+VE/LPD

3-ways flow regulator, pressure compensated, exceeding flow to pressure, pressure relief valve and electrical cut-off on the checked way, specially designed for hydraulic hammers control. PATENTED VALVE

Dimensions and hydraulic circuit



Rating diagrams



Order code

VPR /3 /EP 34 /VMP + VE . □ / LPD /□ /VDS □ / ac

Assembly scheme

NA) Normally opened
NC) Normally closed

Adjustments (see page 122)

S (screw)
V (handknob)
L (lever)
MG (handknob calib. m.a)
MGB (handknob calibrated f.a)

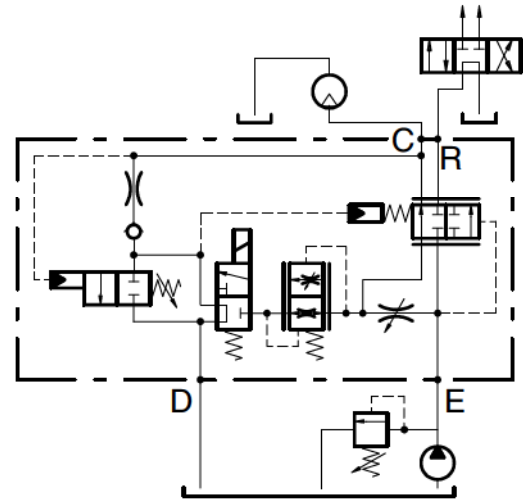
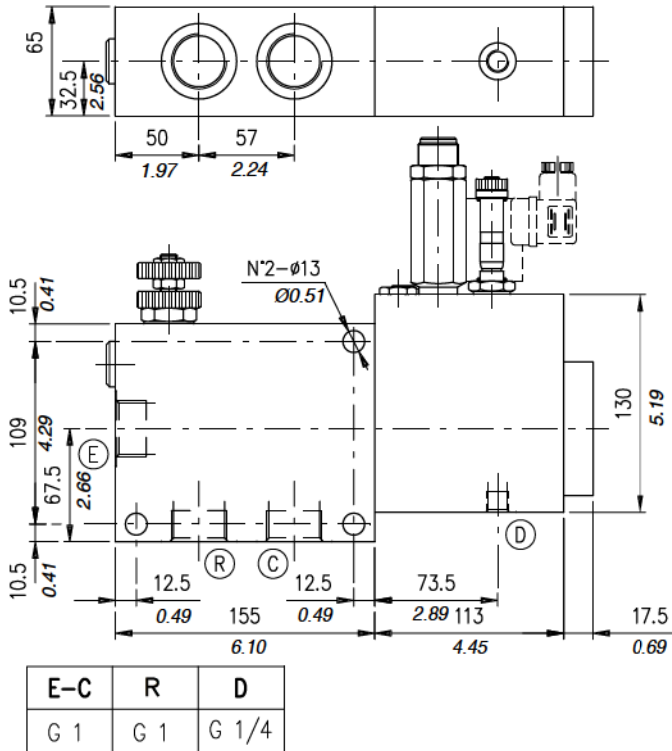
Pressure settings (bar)

TB 0+50 (0-725 psi)
TS 50+220 (725-3200 psi)
TR 180+400 (2600-5800 psi)

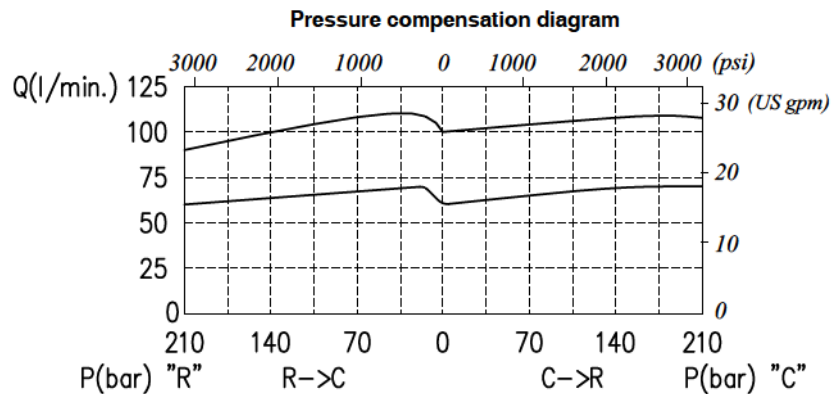
3-ways flow regulator, pressure compensated, exceeding flow to pressure, pressure relief valve and electrical cut-off on the checked way, specially designed for hydraulic hammers control. PATENTED VALVE

Type VPR/3/EP 100/VMP+VE/LPD

Dimensions and hydraulic circuit



Rating diagrams



Order code

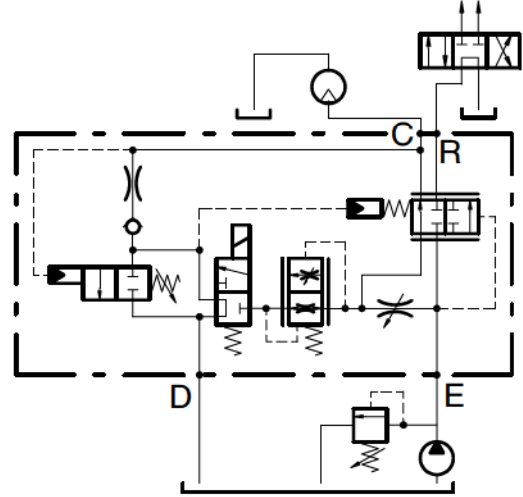
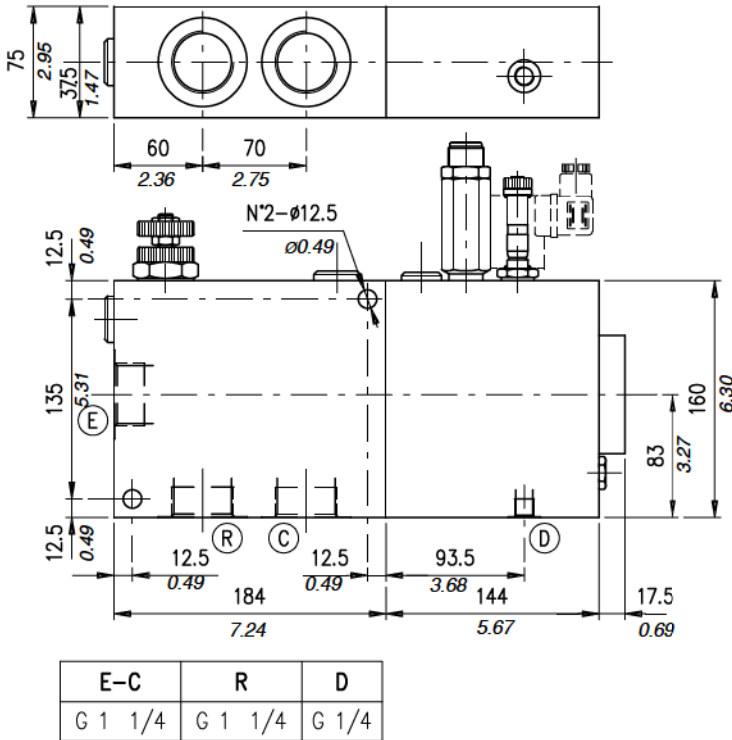
VPR /3 /EP 100 /VMP + VE . □ / LPD /□ /VDS □ / ac

Assembly scheme	Adjustments (see page 122)	Pressure settings (bar)
<p>NA) Normally opened NC) Normally closed</p>	<p>S (screw) V (handknob) L (lever) MG (handknob calib. <i>m.a</i>) MGB (handknob calibrated <i>f.a</i>)</p>	<p>TB 0+50 (0=725 psi) TS 50+220 (725=3200 psi) TR 180+400 (2600=5800 psi)</p>

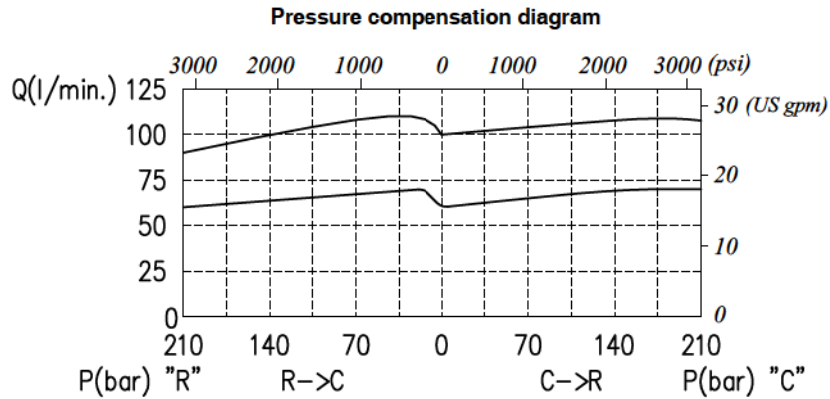
Tipo VPR/3/EP 114/VMP+VE/LPD

3-ways flow regulator, pressure compensated, exceeding flow to pressure, pressure relief valve and electrical cut-off on the checked way, specially designed for hydraulic hammers control. **PATENTED VALVE**

Dimensions and hydraulic circuit



Rating diagrams



Order code

VPR /3 /EP 114 /VMP + VE . □ / LPD /□ /VDS □ / ac

