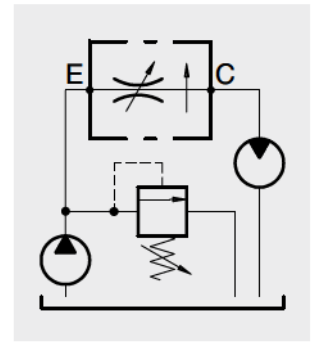


**Operation**

These valves are designed for adjustment of the oil flow from (E) 1 to (C) 2, by means of variations of the oil flowing section. To assure top performance, 10% higher flow should be available in (E) 1 more than in 2. The oil flow doesn't change when pressure in C (2) increases/decreases.



**Performance**

**Body Valves**

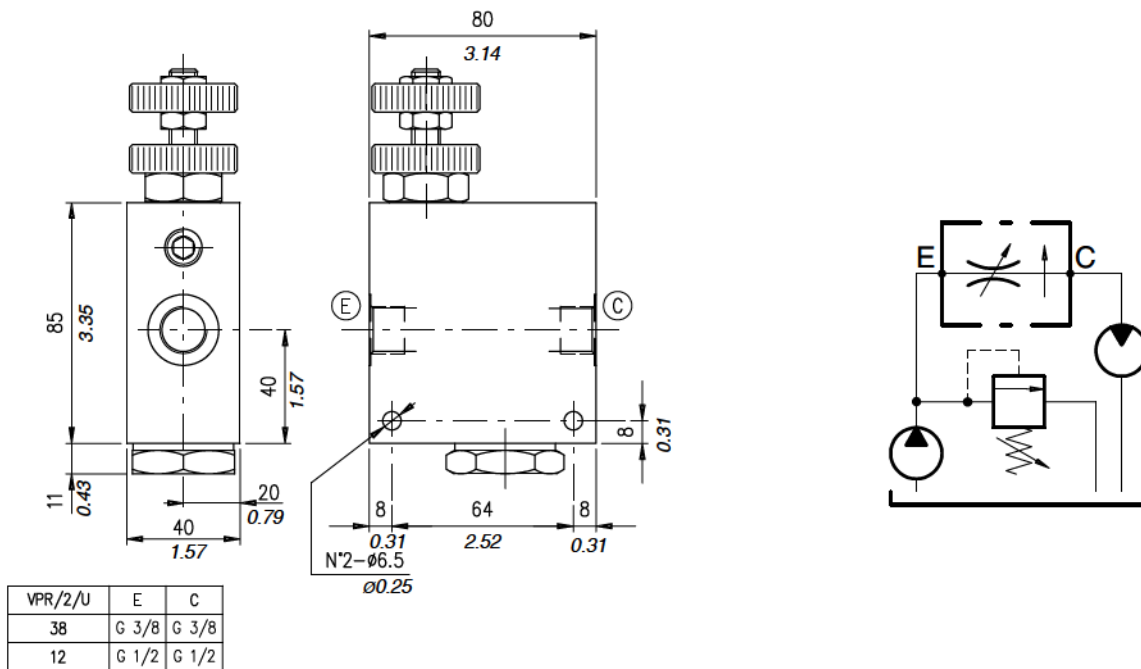
| Type VPR/2/U.. | Max. adjusted flow Qc |        | Max. pressure  | Weight                           |                                   |
|----------------|-----------------------|--------|--|----------------------------------|-----------------------------------|
|                | l/min.                | US gpm |  | kg                               | lb                                |
| VPR/2/U/38     | 30                    | 7.9    | 210 bar<br>-3050 psi-<br>(aluminium body)<br>350 bar<br>-5100 psi-<br>(steel body) | 0,87 (aluminium)<br>1,92 (steel) | 1.91 (aluminium)<br>4,23 (steel)  |
| VPR/2/U/12     | 50                    | 13     |  | 0,90 (aluminium)<br>1,95 (steel) | 1.98 (aluminium)<br>4.3 (steel)   |
| VPR/2/U/34     | 90                    | 24     |  | 1,70 (aluminium)<br>3,55 (steel) | 3.75 (aluminium)<br>7.83 (steel)  |
| VPR/2/U/100    | 150                   | 40     |  | 3,92 (aluminium)<br>8,34 (steel) | 8.64 (aluminium)<br>18,39 (steel) |

**Cartridges**

| Type PU... | Flow   |        | Max. pressure bar     | Cavities and tools        | Weight |      |
|------------|--------|--------|-----------------------|---------------------------|--------|------|
|            | l/min. | US gpm |                       |                           | kg     | lb   |
| PU08A      | 15     | 3.9    | 350 bar<br>-5100 psi- | *see page 129<br>SAE 8/2  | 0,18   | 0.40 |
| PU10A      | 25     | 6.6    |                       | *see page 129<br>SAE 10/2 | 0,20   | 0.44 |
| PU12A      | 50     | 13     |                       | *see page 129<br>SAE 12/2 | 0,30   | 0.66 |
| PU16A      | 90     | 24     |                       | *see page 129<br>SAE 16/2 | 0,55   | 1.21 |

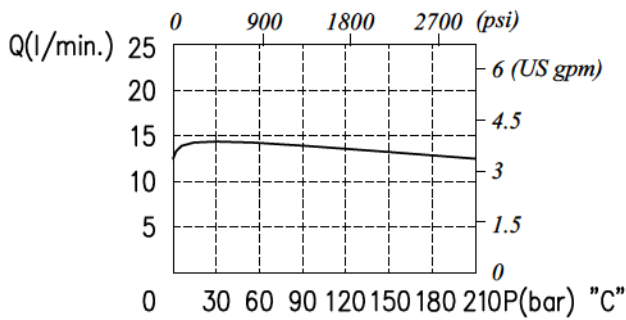
\*the cavity have to report also the features of variation "A" see page 129

## Dimensions and hydraulic circuit

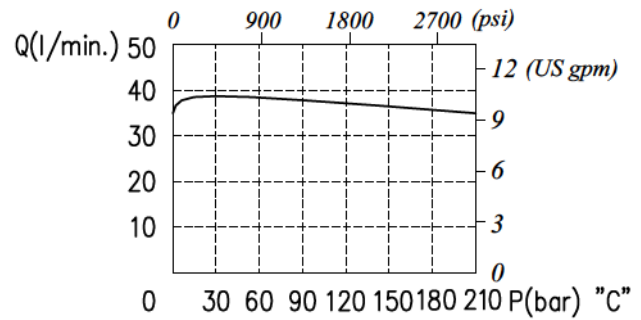


## Rating diagrams

Pressure compensation diagram E→C - VPR/2/U 38

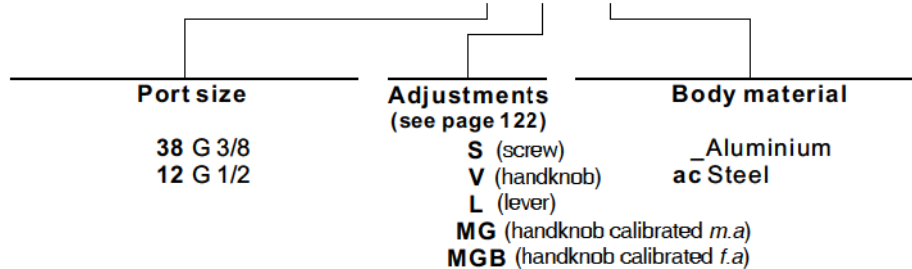


Pressure compensation diagram E→C - VPR/2/U 12

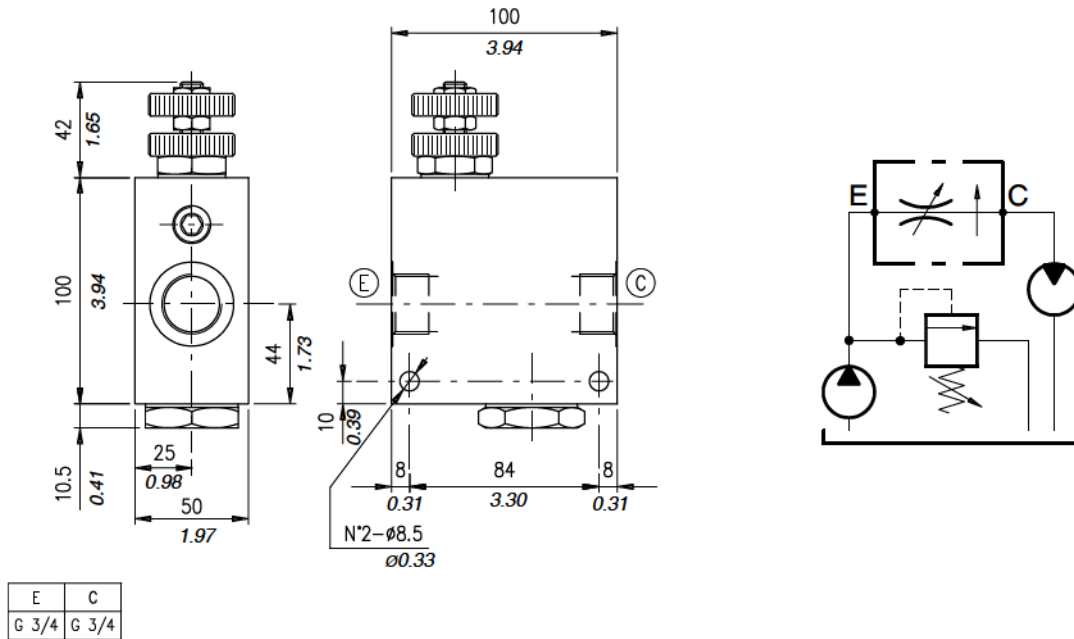


## Order code

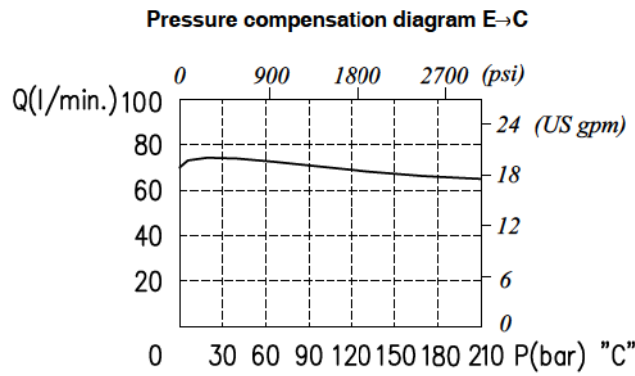
VPR / 2 / U □ / □ / □



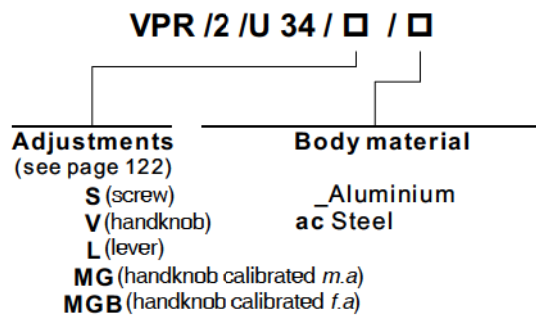
**Dimensions and hydraulic circuit**



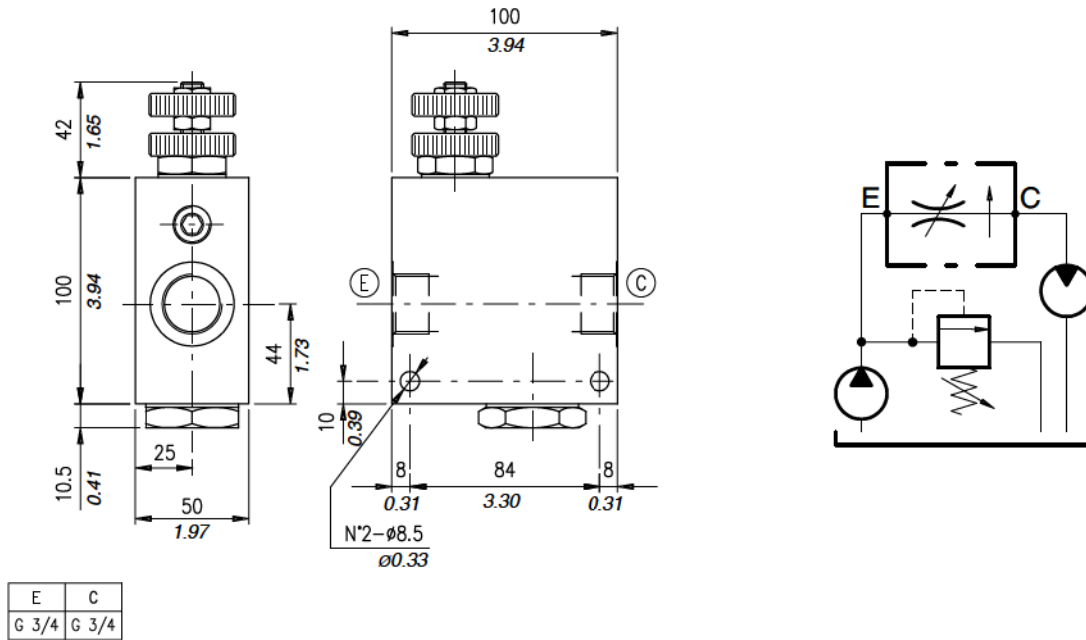
**Rating diagrams**



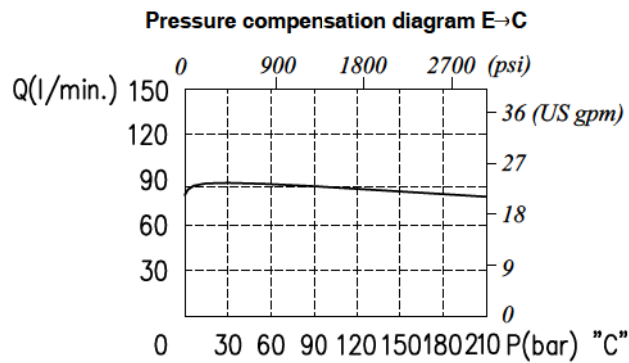
**Order code**



## Dimensions and hydraulic circuit



## Rating diagrams



## Order code

