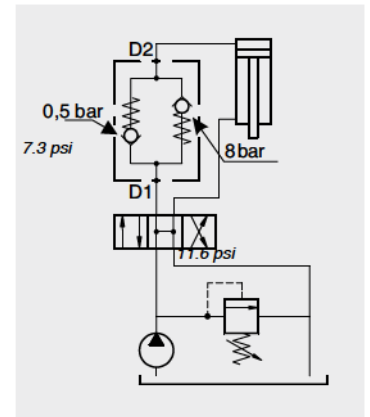


Operation

Free oil flow from D1 to D2 is performed at 0.5 bar-7.3 psi pressure while oil flow from D2 to D1 is produced at 8 bar pressure.



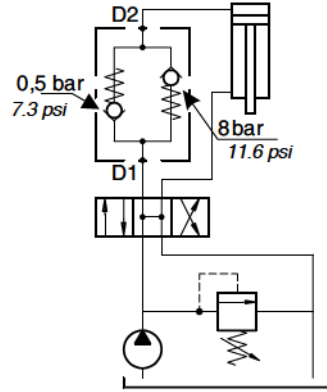
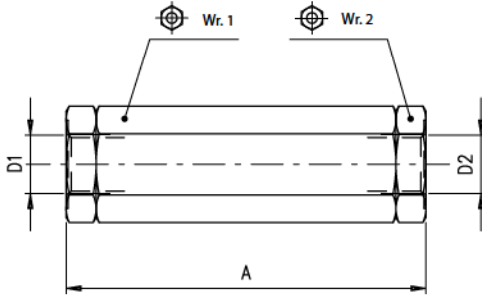
Performance

Body Valves

Type VBD	Maximum flow		Maximum pressure		Opening pressure	Oil leaks from U to E	Weight	
	l/min	US gpm	bar	psi			kg	lb
VBD 38 (12)	(38) 25 (12) 40	6.6 10.5	350	5100	free flow from D1 to D2=0,5 bar -7.3 psi controlled flow da D2 a D1=8* -116 psi	0,25 cm ³ /min -15x10 ⁻³ in ³ /min. (5 drops)	(38) 0,46	1.01
VBD 34	70	18					1,5	3.31

*on request it is possible to perform a faisability study for special settings

Dimensions and hydraulic circuit

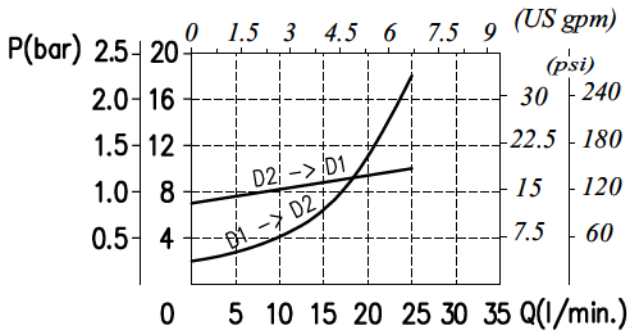


VBD	A	Wr.1	Wr.2	D1-D2
38	102 - 4.01	30 - 1.18	30 - 1.18	G 3/8
12	129 - 5.08	30 - 1.18	27 - 1.06	G 1/2

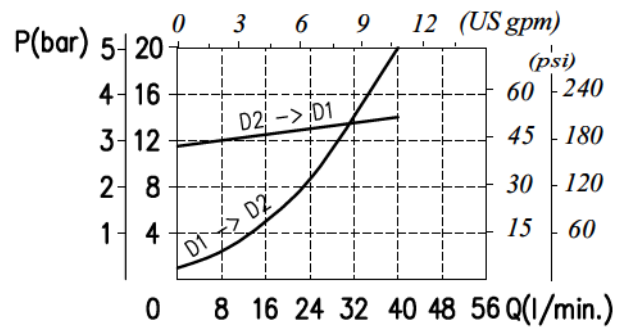
dimensions are in mm-in

Rating diagrams

Typical pressure drop vs. flow characteristic (38)



Typical pressure drop vs. flow characteristic (12)



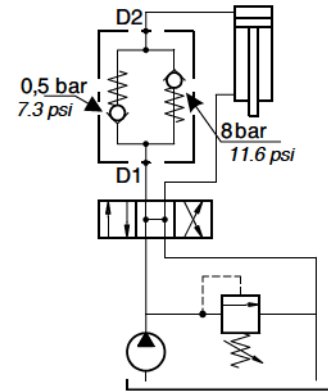
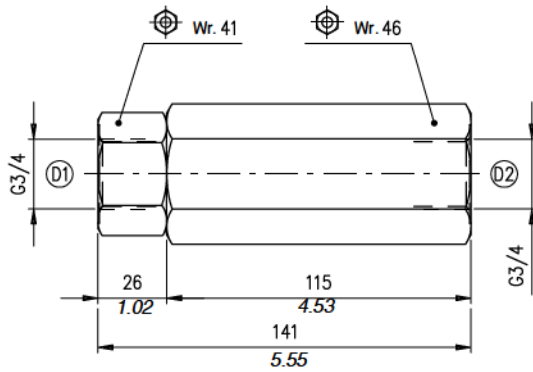
Order code

VBD □□ / Pa 0,5 - 8

Port size

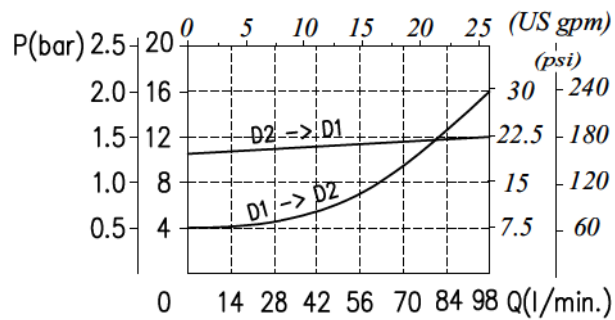
38) G 3/8
12) G 1/2

Dimensions and hydraulic circuit



Rating diagrams

Typical pressure drop vs. flow characteristic



Order code

VBD 34 / Pa 0,5 - 8